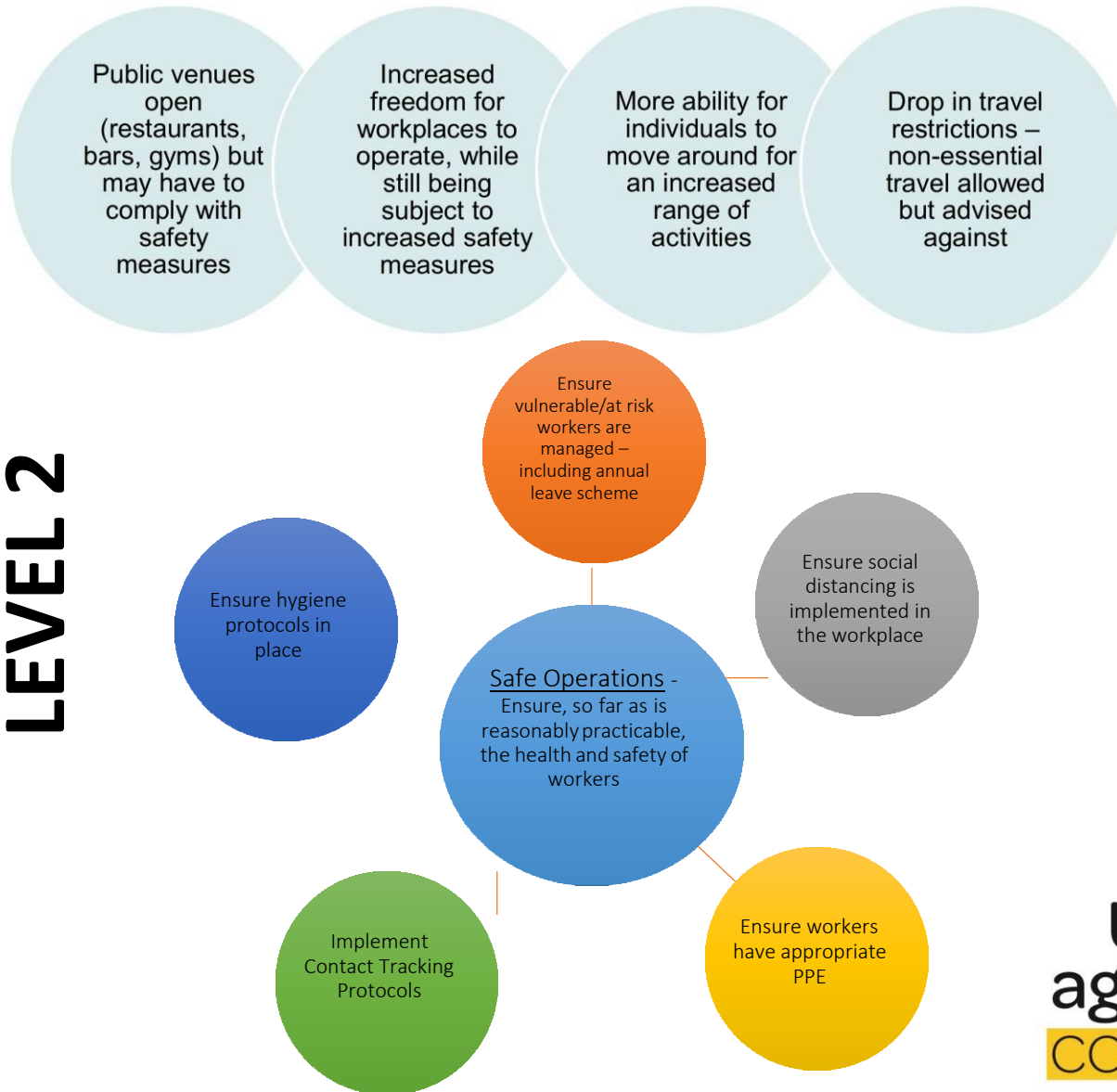


COVID-19 – ALERT LEVEL 2

14th May 2020: Moving to Level 2: Key changes



- ✓ Working from home for “vulnerable” workers still applies where necessary
- ✓ All consultations/contacts with patients must be strictly screened before face to face or home visits are completed
- ✓ Stricter hygiene, social distancing and contact tracking protocols in place
- ✓ We will communicate with you individually regarding any impact Level 2 will have on you specifically
- ✓ If you have flu or COVID symptoms or feeling unwell, please stay at home and call your GP or the Health line: 0800 358 5453
- ✓ Sick, Annual and other leave is still applicable during COVID-19.

Unite
against
COVID-19

