



GPNZ Panui 29 October 2020

Now fortnightly! Please feel free to share this with your colleagues in the sector and encourage them to sign up to receive future editions by emailing:

admin@gpnz.org.nz

Previous editions of our newsletter can be found [here](#)

If you no longer want to receive newsletters from GPNZ please email admin@GPNZ.org.nz with the message 'Newsletter cancel'

Chair's Message



With a new Cabinet about to be finalised, we can expect the brakes to come off the much-anticipated health system reforms. The big question is how much change we can expect, and will address the things that matter or simply be a disruptive exercise in organisational restructure.

Labour's health policy reflects its 'Let's keep moving' theme, so we already know the general direction and that surprises are unlikely.

Nevertheless, it will be encouraging to see real pace in areas where there are long standing policy commitments, such as implementation of new

primary mental health and addiction services. And if primary care is the 'first cab off the rank' in moves towards public sector pay equity, we may also finally see progress in the practice nurses' pay stalemate – though it looks like we shouldn't get our hopes up just yet.

As the implementation plan for the intended reforms starts to emerge, GPNZ wants to see a focus on realising the future Tier 1's full potential to improve population health and wellbeing. That means, alongside revision of various relationships and accountabilities, we need to make a real difference in some of the more challenged areas that have had scant attention, such as workforce.

We urgently need to train and recruit many more people into more diverse roles in primary and community settings - and they need to be well supported and paid fairly to ensure they stay, or all the well-intended efforts to transform organisations will be meaningless.

Meanwhile, general practice funding is still the elephant in the room that policy-makers have successfully avoided looking at throughout the previous parliamentary term. We have to resolve this by addressing some of the hard questions - how to achieve equitable access; how to incentivise prevention and wellness activity; what place co-payments have; and what a sustainable business model looks like.

We know we are entering a period of huge economic challenge and uncertainty, but investment in primary care and in the enablers of an effective health system, will pay dividends in economic, as well as physical and mental

health.

We will be reiterating this message to decision-makers, and hope to have early meetings with the new health ministerial team and members of the Health Select Committee.

He waka eke noa.

Dr Jeff Lowe

GPNZ's Primary Care Briefing Video



It is usual for public agencies to produce a briefing for incoming ministers (BIM) following the formation of a new Government. These documents are intended to raise awareness of significant

issues and opportunities so that the new ministerial team and cabinet can quickly get up to speed. GPNZ has released a short video to support ministers to understand the issues and opportunities in primary care. [This briefing video](#) has been shared with incoming MPs. Please feel free to share it across your networks as a snapshot of what happens in primary care and what we need in order to do more.

Upcoming GPNZ Meetings November

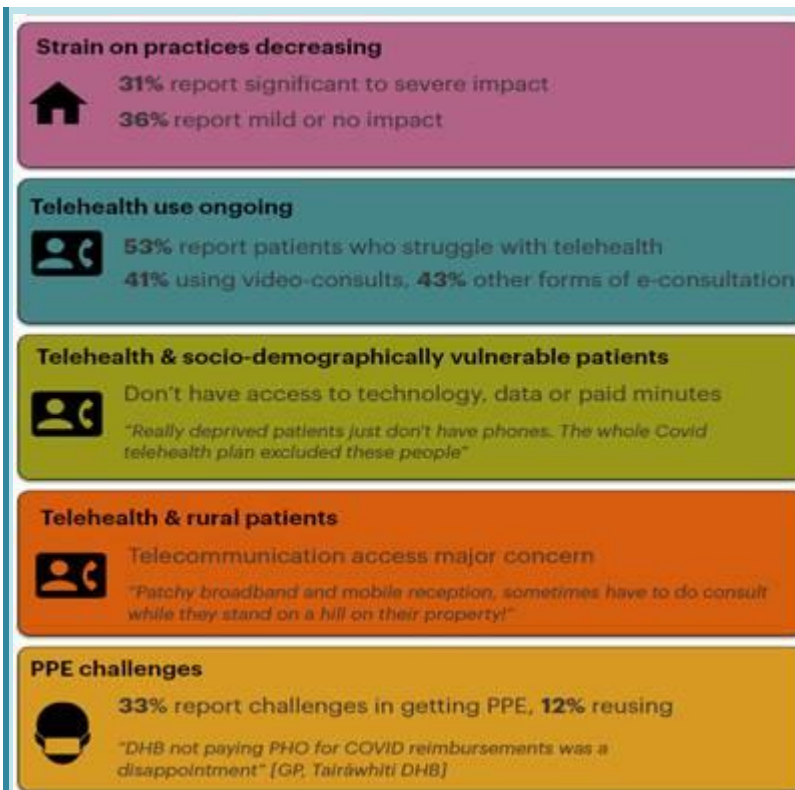
4th November – GPNZ CIO Huddle

4th November – PHO Clinical Leaders System Review Forum

4th November – GPNZ Māori Leadership Group

6th November – PHO CEOs meeting

27th November - GPNZ Member Annual Planning and AGM



University of Auckland Survey

The results of the 8th survey in the UoA Covid Survey

series are now available [here](#).

One of the key areas of interest in the latest survey is concern around telehealth service delivery. The policy recommendation highlights that care needs to be taken to ensure that telehealth is only used for consultations where appropriate, and that barriers to its use by vulnerable patients are identified and addressed, to prevent increasing health disparities.

As the community outbreak has settled, the survey team is continuing with monthly surveys. The next will go out on 9th November, GPNZ will share the link to the next survey in our newsletter on 11 November.

For more information please contact Felicity Goodyear-Smith, f.goodyear-smith@auckland.ac.nz. Approved by the University of Auckland Human Participants Ethics Committee on 11/05/20 for three years. Reference Number 024659. This project is funded by an MBIE COVID-19 Innovation Acceleration Grant