

HEALTHY PRIMARY CARE

putting patients first • helping those who help • shaping systems

What have we been up to?

April - June 2021

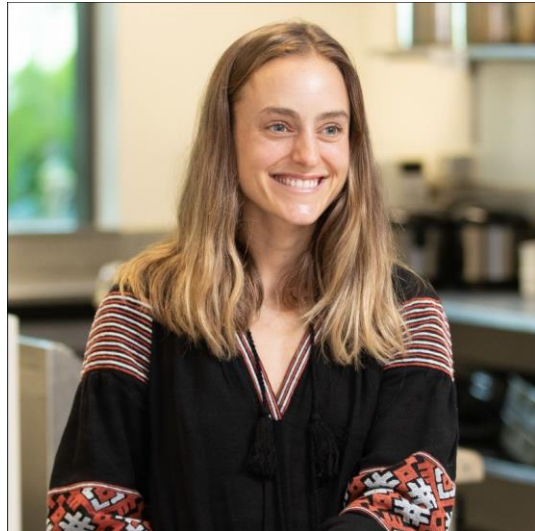
Welcome to our second newsletter! I am amazed to reflect on the past three months, and see that we have grown in capacity and have also continued to have impact in many ways. I'm proud of our PhD candidates and postdoctoral researchers who are publishing papers and getting ready for conferences, whilst still working on their career visions and ambitions. Watch out for our two PhD scholarships about to be advertised if you are interested in joining our dynamic team at Griffith University in 2022!

Message from our Team Lead, Associate Professor Lauren Ball



NEWS FROM OUR TEAM

Congratulations to Dr Emily Burch, whose PhD with Griffith University was conferred this June. Emily, who will officially graduate in July 2021, completed her thesis with minimal changes on The 3D study. In these studies, Emily investigated how diet changes in people after receiving a diagnosis of type 2 diabetes. You can read an excellent example of Emily's work [here](#).



Congratulations to Associate Professor Lauren Ball like on her new position as Associate Editor of the [Journal of Human Nutrition & Dietetics](#)!



Are you looking to do your PhD?

The Healthy Primary Care team will have two PhD scholarships starting in 2022.

The first will further investigate the role of nutrition in medical education, working with medical educators, councils and Deans of Medicine to develop an implementation framework for increasing the amount of nutrition in medical education programs. We are looking for a passionate person with the equivalent of Honours Class 1 research, familiar with medical education programs in Australia. You will benefit from our international networks in medical nutrition education and be leading our impact initiatives in this area.

The second will continue the work of Nutricare, a free support bundle supplied to general practice workers to support them in raising the topic of nutrition with their patients. We are looking for a passionate person with the equivalent of Honours Class 1 research, familiar with general practice settings. You will be involved in trialling the effectiveness and cost-effectiveness of the support bundle, and working with stakeholders to prepare the bundle for a future national roll out.

For more information, please email Associate Professor Lauren Ball on l.ball@griffith.edu.au.

OUR ACTIVITIES

Our Healthy Primary Care team have recently developed a 'Knowledge Database' that brings together resources, tools and other helpful information about conducting research. New resources are being continuously created and uploaded onto the database and relate to study design, conduct, dissemination, knowledge translation, impact, engagement and so much more. Our hope is that by creating, updating and evaluating the resources we use as a team, we can continue to build our team's already high research capacity and quality.

HEALTHY PRIMARY CARE

KNOWLEDGE DATABASE



Check out our latest [Conversation article](#) written by A/Prof Lauren Ball, Dr David Chua and Dr Katelyn Barnes.

Since the outbreak of the pandemic, the role of medical receptionists has changed dramatically. Receptionists are now providing health advice to patients, monitoring COVID-19 symptoms, and even providing basic triage. Please remember to be patient and kind with your GP receptionists in these difficult times.

We appreciate your comments and Twitter shares to increase the engagement of our work.

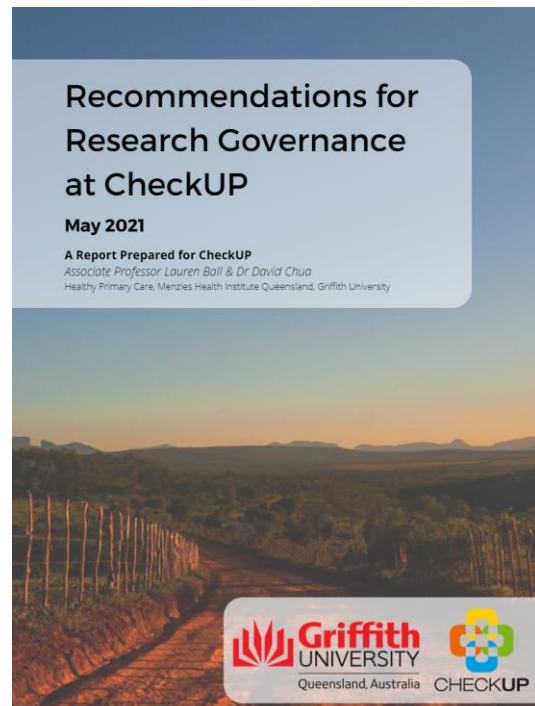
PhD candidate Bryce Brickley has shared his work on patient-centred care with the [Deeble Institute for Health Policy Research](#).

The Deeble Institute promotes and shares rigorous and independent research that informs national health policy. They do this by providing research translation opportunities to researchers researchers so that they can connect with policymakers and practitioners.

[Read more here.](#)



Team lead, A/Prof Lauren Ball and research manager, Dr David Chua have created a report on recommendations for research governance for CheckUP, a not-for-profit organisation aimed at reducing health inequalities.



Our team participated in the 2021 Pint of Science AU Festival. We shared our work with countless other Australian researchers through the #ThisIsMyScience event on Twitter, and supported A/Prof Lauren Ball on YouTube as she competed in The Big Pint Show Trivia.

To find out more about Pint of Science and join in on next years event, click [here](#).



In May this year, many of our team members were provided the opportunity to participate in the Science Media Savvy workshop, created by the Australian Science Media Centre.

The workshop helped our team increase their confidence and skills in engaging with the media to effectively share their research to diverse audiences.

Find out more [here](#).

GET INVOLVED IN OUR LATEST STUDY!

What does high quality dietetic care mean to you?

Do you think performance and satisfaction information for individual dietitians should be publicly available? Do you think standards that ensure consistent care are necessary for dietetics? Griffith University is surveying primary care professionals about their views on dietetic practice in an "ideal world". The survey aims to explore views of healthcare consumers and professionals on ten statements describing aspirational goals for primary care dietetics. We have surveyed 140 healthcare consumers and want to hear your thoughts. Complete our 10-minute survey for the chance to win one of four \$50 Coles Group gift cards.

Email amy.kirkegaard@griffithuni.edu.au for more information and to be sent our

OUR LATEST PUBLICATIONS



[How do healthcare providers support people with prediabetes to eat well? An in-depth, mixed-methods case study of provider practices](#)

This study explored healthcare provider practices and views towards giving nutrition advice to people with prediabetes. The study took place in one large medical clinic in southeast Queensland between May 2019 and January 2020. The findings indicate that patients are possible not being supported in general practice to receive dietary advice, which is vital for people with prediabetes and type 2 diabetes.

Authored by: Mari Somerville, Lauren Ball, David Chua, Tracey Johnson, Suzanne Williams and Lauren T Williams.

[What role do dietitians have in providing nutrition care for eating disorder treatment? An integrative review](#)

Dietitians are recognised as experts in nutrition care and essential members of multidisciplinary health care teams. However, dietitians' role in caring for people with eating disorders is not well understood. This review explored perspectives regarding the role of dietitians in the treatment of eating disorders and was conducted to understand more about their role and how confident dietitians feel providing care for EDs. This work was also featured in the [Griffith University Health News](#).

Authored by: Alana Heafala, Lauren Ball, Jessica Rayner, Lana J. Mitchell.

[Studying the transition from Graduate to Health Practitioner: The Griffith Dietetics Graduate Outcomes Survey](#)

Understanding the employment rates and sectors of new graduates is important to ensure they are prepared to navigate their career journey ahead. However, detailed data for the dietetics profession has been lacking. The Griffith Dietetic Graduate Outcomes Survey has been specifically designed to track the employment outcomes of dietitians as they transition to employment. This study followed the career journey of three dietetic cohorts from 2017 to 2019 for the first six months.

Authored by: Alana Heafala, Lana J Mitchell, Lauren T Williams.

We look forward to regularly sharing our content with you, and welcome hearing about your work. Please get in touch here:



[More info](#)



[Tweet](#)



[Share](#)



[Forward](#)